



SRI SIVANI COLLEGE OF PHARMACY

(Under the Management of Sri Sivani Educational Society, Srikakulam)
(Estd.2007, Approved by PCI-New Delhi and Affiliated to JNTU, Gurajada-Vizianagaram)
N.H-16, Chilakapalem Jn., Etcherla Mandal, Srikakulam Dist - 532402.

PAPER MULBERRY

BOTINICAL NAME: *BROUSSONETIA PAPYRIFERA*

FAMILY: Moraceae

SYNONYMS:

ENGLISH: Tapa cloth tree

HINDI: kaagajshahatoot

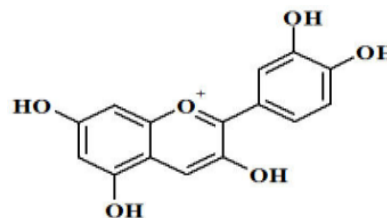
TAMIL: Kāgitam̄malbarī

TELUGU: Kāgitam̄malbarī



CHEMICAL CONSTITUENTS:

- ❖ Paper mulberry consists of various chemical constituents, with the main bioactive compounds including flavonoids, tannins, alkaloids, phenols, saponins, coumarins, glycosides, and polysaccharides.



USES:

- ❖ Fast-growing
- ❖ Ornamental shade tree.
- ❖ In its native lands, paper mulberry is used in paper making
- ❖ In Hawaii and other parts of the South Pacific
- ❖ Its bark is used to make cloth
- ❖ Blood in sputum
- ❖ Vomiting blood
- ❖ Uterine bleeding
- ❖ Excess menstrual bleeding wounds in Chinese medicine
- ❖ Bleeding stomach in Hawaii.